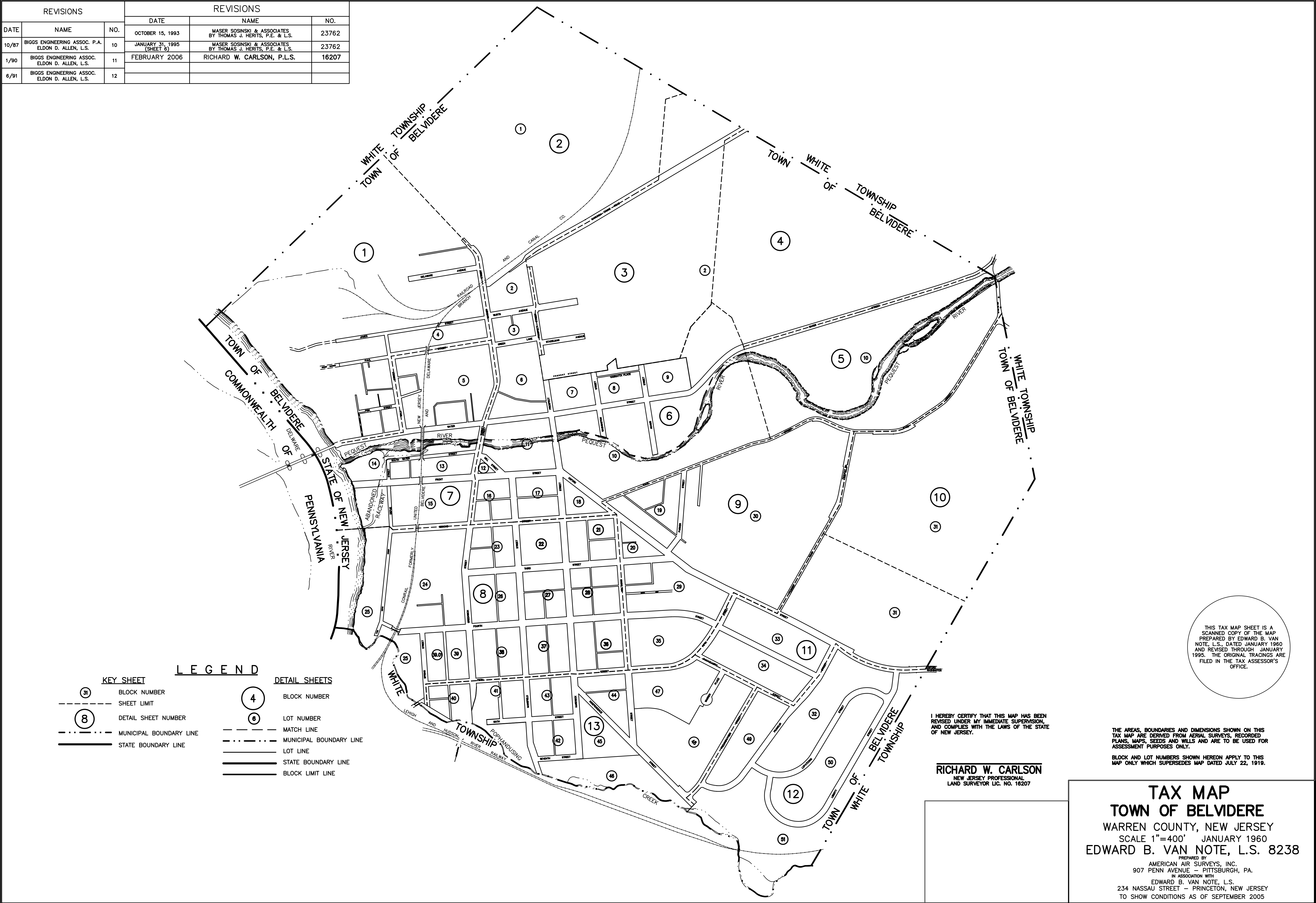
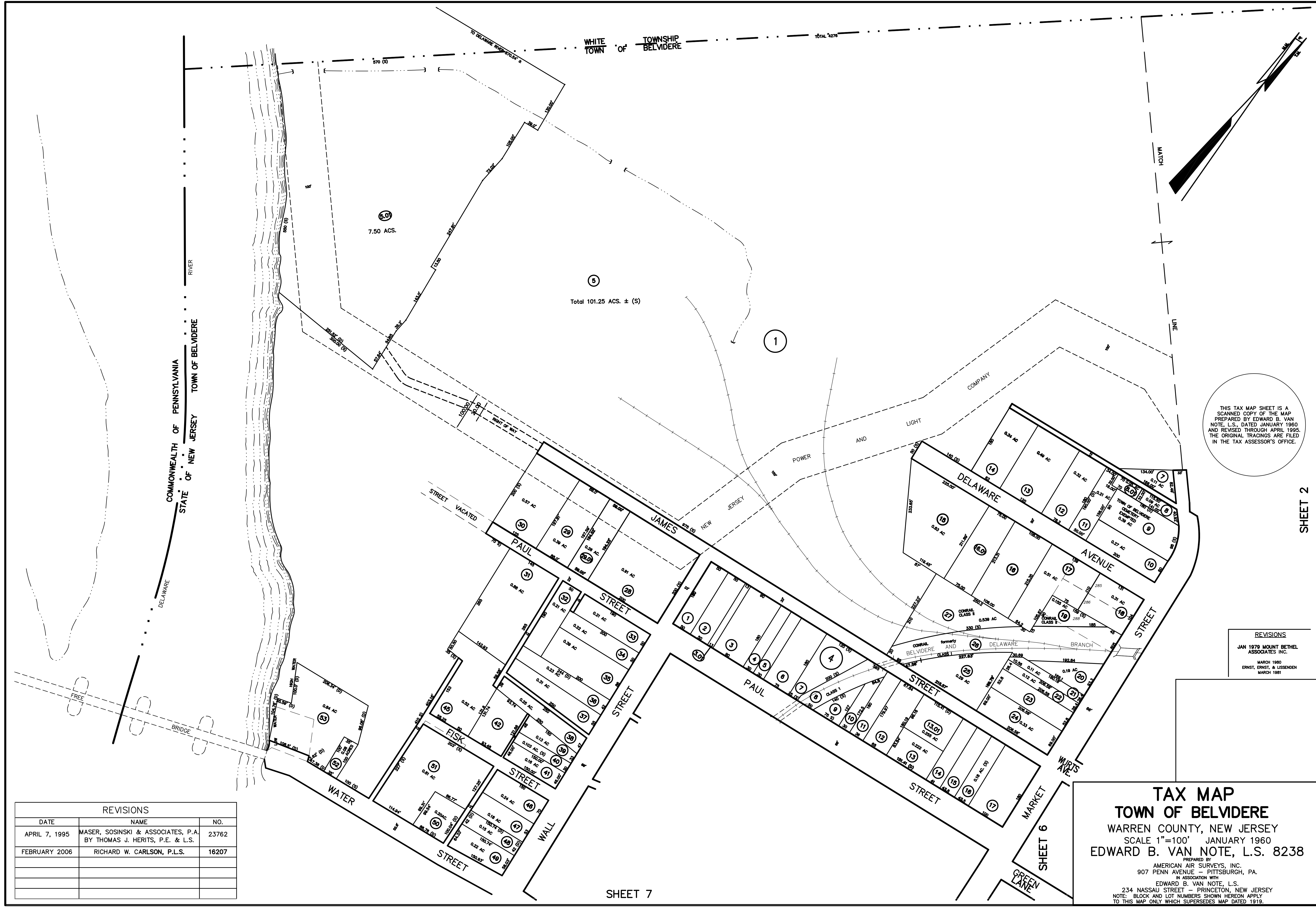


REVISIONS			REVISIONS		
DATE	NAME	NO.	DATE	NAME	NO.
10/87	BIGGS ENGINEERING ASSOC. P.A. ELDON D. ALLEN, L.S.	10	OCTOBER 15, 1993	MASER SOSINSKI & ASSOCIATES BY THOMAS J. HERITS, P.E. & L.S.	23762
1/90	BIGGS ENGINEERING ASSOC. ELDON D. ALLEN, L.S.	11	JANUARY 31, 1995 (SHEET 8)	MASER SOSINSKI & ASSOCIATES BY THOMAS J. HERITS, P.E. & L.S.	23762
6/91	BIGGS ENGINEERING ASSOC. ELDON D. ALLEN, L.S.	12	FEBRUARY 2006	RICHARD W. CARLSON, P.L.S.	16207





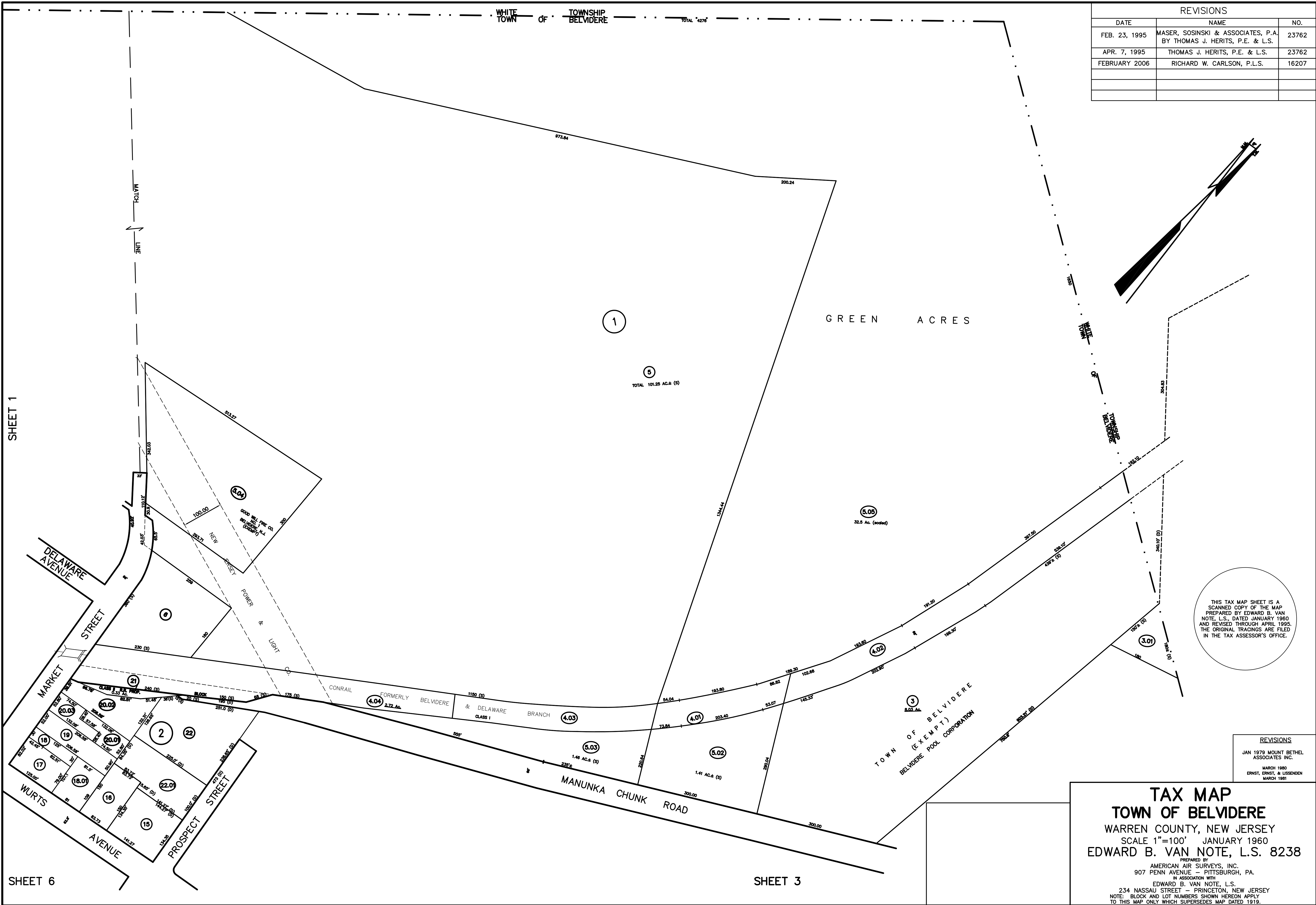
REVISIONS		
DATE	NAME	NO.
APRIL 7, 1995	MASER, SOSINSKI & ASSOCIATES, P.A. BY THOMAS J. HERITS, P.E. & L.S.	23762
FEBRUARY 2006	RICHARD W. CARLSON, P.L.S.	16207

**TAX MAP**  
**TOWN OF BELVIDERE**  
WARREN COUNTY, NEW JERSEY  
SCALE 1"=100' JANUARY 1960  
EDWARD B. VAN NOTE, L.S. 8238

PREPARED BY  
AMERICAN AIR SURVEYS, INC.  
907 PENN AVENUE - PITTSBURGH, PA.  
IN ASSOCIATION WITH  
EDWARD B. VAN NOTE, L.S.  
234 NASSAU STREET - PRINCETON, NEW JERSEY

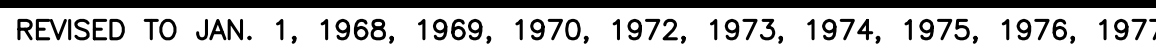
NOTE: BLOCK AND LOT NUMBERS SHOWN HEREON APPLY  
TO THIS MAP ONLY WHICH SUPERSEDES MAP DATED 1919.

REVISIONS
JAN 1979 MOUNT BETHEL ASSOCIATES INC.
MARCH 1980 ERNST, ERNST, & LISSENDEN MARCH 1981



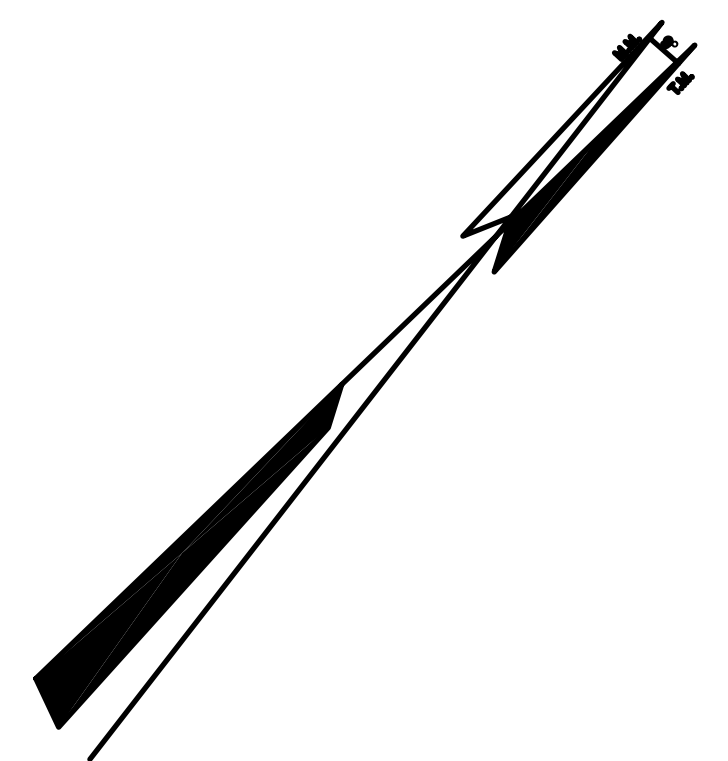






SHEET 4

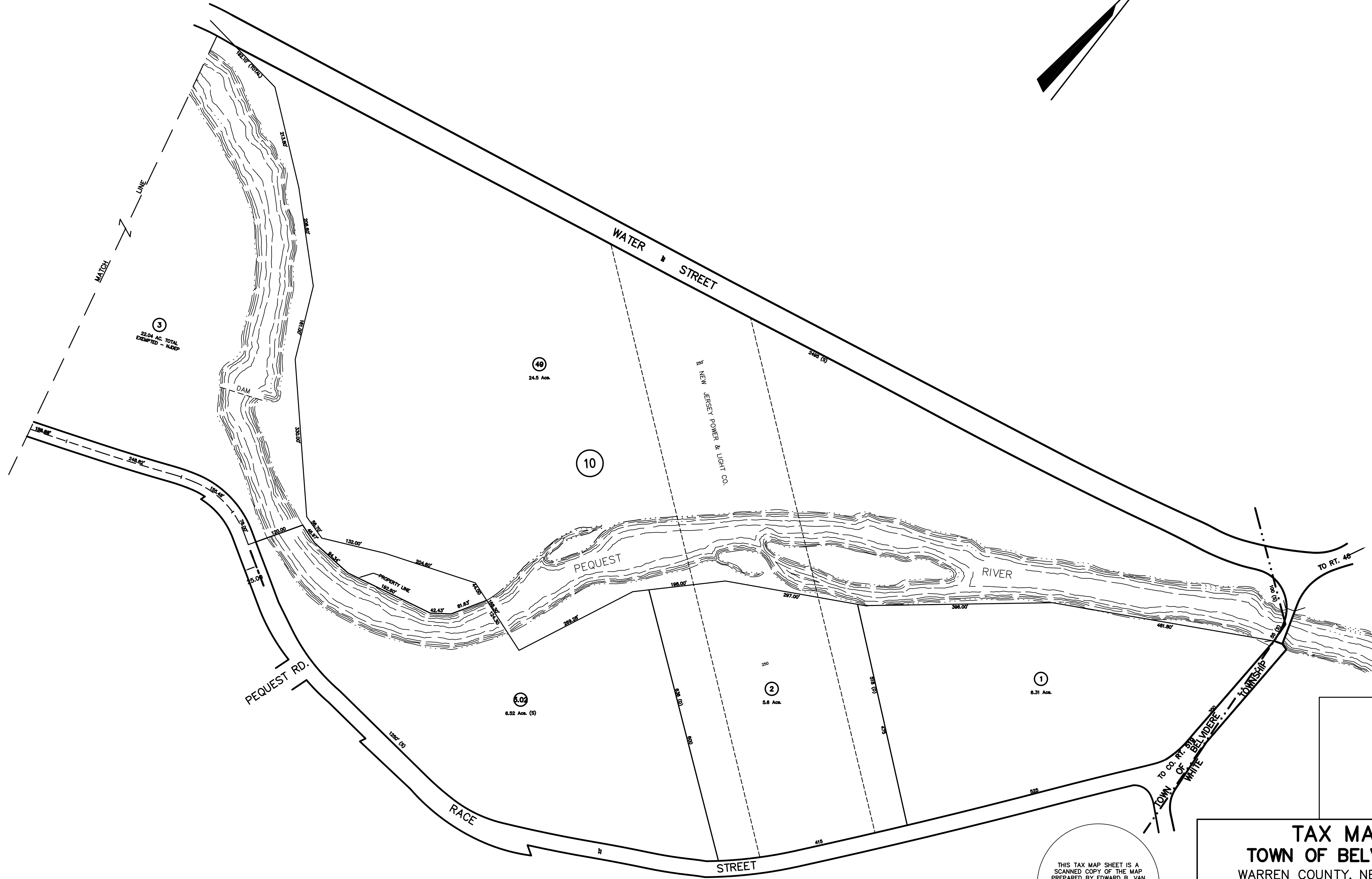
REVISIONS		
DATE	NAME	NO.
FEBRUARY 2006	RICHARD W. CARLSON, P.L.S.	16207



SHEET 6

SHEET 9

SHEET 10



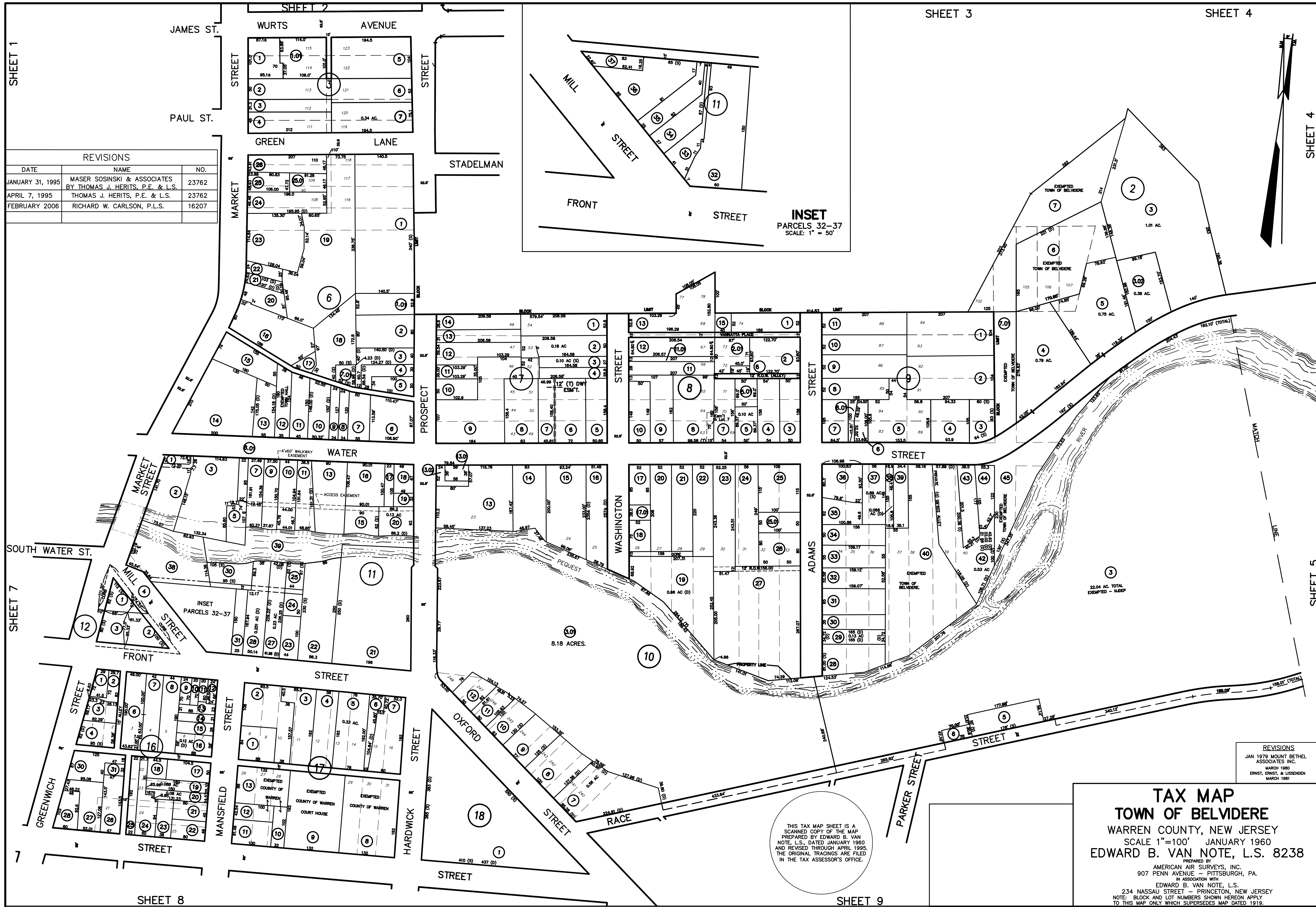
REVISIONS	
MARCH 1980	ERNST, ERNST, & LUSSENSEN
MARCH 1981	

THIS TAX MAP SHEET IS A  
SCANNED COPY OF THE MAP  
PREPARED BY EDWARD B. VAN  
NOTE, L.S., DATED JANUARY 1960  
AND REVISED THROUGH MARCH 1981.  
THE ORIGINAL TRACINGS ARE FILED  
IN THE TAX ASSESSOR'S OFFICE.

**TAX MAP**  
**TOWN OF BELVIDERE**  
WARREN COUNTY, NEW JERSEY  
SCALE 1"=100' JANUARY 1960  
EDWARD B. VAN NOTE, L.S. 8238

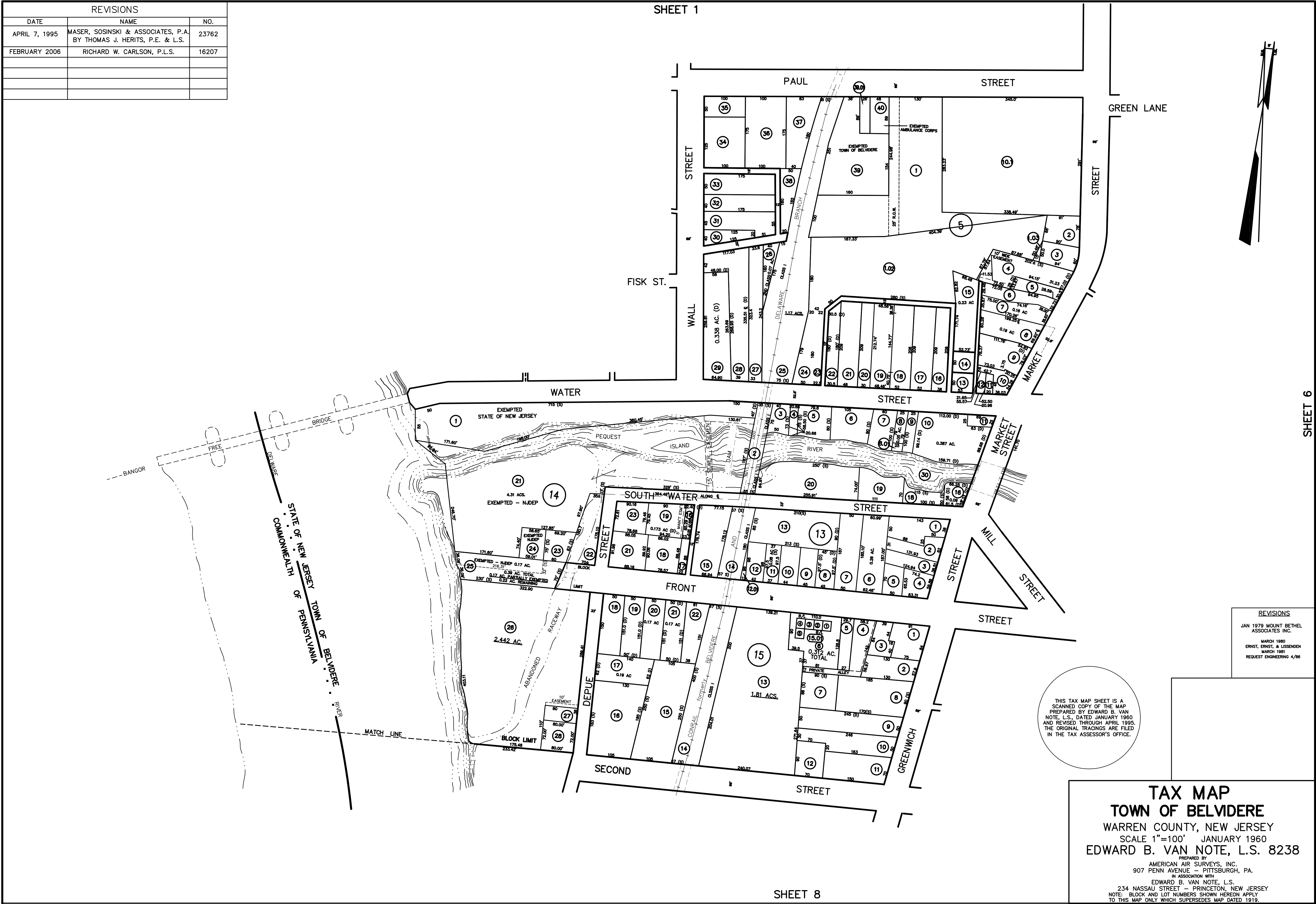
PREPARED BY  
AMERICAN AIR SURVEYS, INC.  
907 PENN AVENUE - PITTSBURGH, PA.  
IN ASSOCIATION WITH  
EDWARD B. VAN NOTE, L.S.  
234 NASSAU STREET - PRINCETON, NEW JERSEY

NOTE: BLOCK AND LOT NUMBERS SHOWN HEREON APPLY  
TO THIS MAP ONLY WHICH SUPERSEDES MAP DATED 1919.

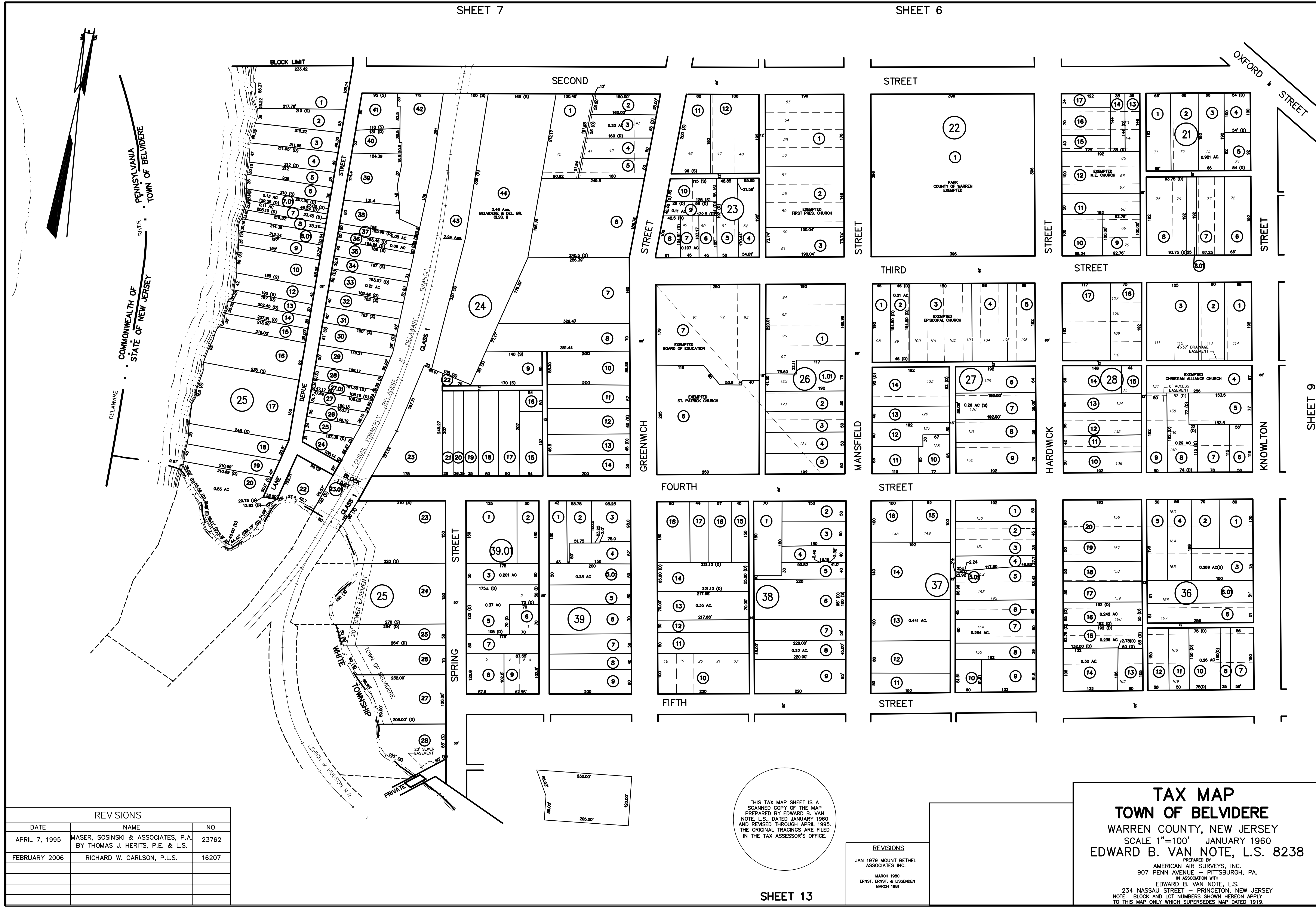




REVISIONS		
DATE	NAME	NO.
APRIL 7, 1995	MASER, SOSINSKI & ASSOCIATES, P.A. BY THOMAS J. HERITS, P.E. & L.S.	23762
FEBRUARY 2006	RICHARD W. CARLSON, P.L.S.	16207







REVISIONS		
DATE	NAME	NO.
APRIL 7, 1995	MASER, SOSINSKI & ASSOCIATES, P.A. BY THOMAS J. HERITS, P.E. & L.S.	23762
FEBRUARY 2006	RICHARD W. CARLSON, P.L.S.	16207

THIS TAX MAP SHEET IS A  
SCANNED COPY OF THE MAP  
PREPARED BY EDWARD B. VAN  
NOTE, L.S., DATED JANUARY 1960  
AND REVISED THROUGH APRIL 1995.  
THE ORIGINAL TRACINGS ARE FILED  
IN THE TAX ASSESSOR'S OFFICE.

REVISIONS	
JAN 1979 MOUNT BETHEL ASSOCIATES INC.	
MARCH 1980 ERNST, ERNST, & LISSENDEN MARCH 1981	

TAX MAP

TOWN OF BELVIDERE

WARREN COUNTY, NEW JERSEY

SCALE 1"=100' JANUARY 1960

EDWARD B. VAN NOTE, L.S. 8238

PREPARED BY

AMERICAN AIR SURVEYS, INC.

907 PENN AVENUE - PITTSBURGH, PA.

IN ASSOCIATION WITH

EDWARD B. VAN NOTE, L.S.

234 NASSAU STREET - PRINCETON, NEW JERSEY

NOTE: BLOCK AND LOT NUMBERS SHOWN HEREON APPLY  
TO THIS MAP ONLY WHICH SUPERSEDES MAP DATED 1919.

REVISIONS		
DATE	NAME	NO.
APRIL 7, 1995	MASER, SOSINSKI & ASSOCIATES, P.A. BY THOMAS J. HERITS, P.E. & L.S.	23762
FEBRUARY 2006	RICHARD W. CARLSON, P.L.S.	16207

SHEET 6

SHEET 5



SHEET 10

SHEET 11

THIS TAX MAP SHEET IS A  
SCANNED COPY OF THE MAP  
PREPARED BY EDWARD B. VAN  
NOTE, L.S., DATED JANUARY 1960  
AND REVISED THROUGH APRIL 1995.  
THE ORIGINAL TRACINGS ARE FILED  
IN THE TAX ASSESSOR'S OFFICE.

REVISIONS	
JAN 1979	MOUNT BETHEL ASSOCIATES INC.
MARCH 1980	ERNST, ERNST, & USSENDOEN
MARCH 1981	PEQUEST ENGINEERING 4/86

**TAX MAP**  
**TOWN OF BELVIDERE**  
WARREN COUNTY, NEW JERSEY  
SCALE 1"=100' JANUARY 1960  
EDWARD B. VAN NOTE, L.S. 8238

PREPARED BY  
AMERICAN AIR SURVEYS, INC.  
907 PENN AVENUE - PITTSBURGH, PA.  
IN ASSOCIATION WITH  
EDWARD B. VAN NOTE, L.S.  
234 NASSAU STREET - PRINCETON, NEW JERSEY  
NOTE: BLOCK AND LOT NUMBERS SHOWN HEREON APPLY  
TO THIS MAP ONLY WHICH SUPERSEDES MAP DATED 1919.





REVISIONS		
DATE	NAME	NO.
APRIL 7, 1995	MASER, SOSINSKI & ASSOCIATES, P.A. BY THOMAS J. HERITS, P.E. & L.S.	23762
FEBRUARY 2006	RICHARD W. CARLSON, P.L.S.	16207

SHEET 9

SHEET 10

